



The DONZI 19 ST. TROPEZ

INCOMPARABLE HIGH PERFORMANCE,
CUSTOM-FINISHED SPORT-FISHING-DAY BOAT

The Donzi St. Tropez incorporates (as do all Donzis) the vast technical advances stemming from winning competition in the world's roughest ocean races. It also incorporates the layout of the venerable Maine fisherman, designed, refined and crafted as only Donzi can do it. The arrangement provides comfortable seating for six adults besides the helmsman; there are 3 built-in fiberglass fish boxes which can serve equally well as bait or beverage boxes. A "Conestoga" top protects the forward cockpit when desired, has large plexiglass forward window. (optional)

UAN 67

SPECIFICATIONS

Length Overall	19' 1/2"
Including Outdrive	21'
Beam	7' 10"
Draft to Keel	2' 3"
To Bottom of outdrive	2' 6"
Freeboard at Bow	2' 4"
Amidship	2' 4"
At Transom	2' 0"
Height, Top of Wheel to Keel	4' 8"
Top of Deck to Keel	4' 0"
Gross Weight	Approx. 2600 lbs.
Fuel Capacity	Approx. 40 Gal.
Speed	
110 Volvo	Approx. 34 mph.
165 Interceptor	Approx. 44 mph.
200 Interceptor	Approx. 48 mph.
Cruising Range at 4000 RPM	
110 Volvo	Approx. 200 mi.
165 Interceptor	Approx. 150 mi.
200 Interceptor	Approx. 140 mi.
Cruising Time at 4000 RPM	
110 Volvo	Approx. 9 hrs.
165 Interceptor	Approx. 6 hrs.
200 Interceptor	Approx. 5 1/2 hrs.
Steering Controls	Custom Mechanical Throttle and Shift Combination
Hardware	Chrome on Brass or Stainless Steel
Upholstery	Naugahyde or Equivalent, red or blue
Finish	Mirror-smooth, Wonder White gel, permanent high gloss

STANDARD EQUIPMENT

Power	110 HP Volvo-Penta Inboard/Outboard; 165 HP Interceptor Inboard/Outboard; 200 HP Interceptor Inboard/Outboard, fresh water cooled
Steering	Positive, mechanical, with custom adaptor
Electric System	12 V, color coded
Instruments	Full instrumentation on molded fiberglass
Controls	Single lever shift/throttle combination
Battery	12 V, 65 amp-hour w/shut off switch
Battery Bracket	Coated steel, racing strength
Fuel System	40 Gallon, custom tank, direct reading gauge, filter, shut off, chrome on brass filler and vent
Engine Filters	Oil, water, air and fuel filters all std.
Blower	12 V, Electric
Bilge Pump	12 V, Automatic and manual submersible
Running Lights	International, stainless steel, recessed stern light
Engine Box	Reinforced, cored fiberglass, sound-deadened, removable, extra large, custom hinges, cushioned
Storage	Under foredeck, with hatch
Engine Ventilation	Adjustable louvered intake, custom exhaust outlet
Rub Rails	High impact molded fiberglass, integral, custom flush trim
Fire Extinguisher	2 1/2 lb. dry chemical
Operation Manual	Engine Manual, wiring diagram, care and maintenance
Fish Boxes	3, fiberglass, built in
Cushions	Custom, foam, zippered, removable, on engine box and console seat
Propeller	3-blade aluminum power wheel
Hardware	Lifting rings with custom brackets, drain plug, vents, towing eye, see-thru fuel gauge cover
Steering Wheel	Custom heavy duty
Oil Lubricant	Special lubes

THE DONZI 19 HORNET 7-LITRE



MAGNIFICENT HIGH PERFORMANCE,
CUSTOM-FINISHED SPORT-SPEED-SKI BOAT

The Donzi Hornet is a refined version of the smashing Donzi 19' ocean racers which established an entire new concept of rough water stability in relatively small hulls. From the 19's have come revolutionary engineering advances which have been incorporated in all Donzis; in all boatdom they are second only to the Donzi 28's insofar as the generation of new hull, structural and control principles are concerned. With standard power (290 HP Chrysler) the Donzi Hornet 7-Litre will top 54 mph in rough water; available power options will turn up speeds in excess of 60 mph. Principal dimensions and specifications are similar to those of the Donzi 19 St. Tropez; details of this 4-passenger speedster will be furnished upon request.



DESIGN • RESEARCH ENGINEERING • TESTING • RACING • CONSTRUCTION OF HIGH PERFORMANCE BOATS



19

ST. TROPEZ

Take one high-performance sport boat, lay it out like the venerable Maine fisherman—with a central control console which allows access to the gun-wales all the way around—and then craft it as only Donzi can, and you have the St. Tropez. She has comfortable seating for six adults in addition to the helmsman, when you want her to be a sport boat; take out the front cushions and you even have a non-slip casting deck. There are three built-in fish-bait-beverage boxes. And she'll run 35 with standard 120 MerCruiser, 50 with a 200 HP Interceptor. Finish and fitting-out are Donzi Custom, of course.



**ST.
TROPEZ
19**

STANDARD EQUIPMENT — **Steering:** Teleflex mechanical • **Electric System:** 12 volt, color coded, fused • **Instruments:** Tachometer, ammeter, oil pressure, water temperature, electric fuel gauge • **Controls:** Morse single lever throttle and shift combination • **Battery:** 12 volt, 65 ampere-hour marine • **Fuel System:** 40 gallon hot dipped galvanized tank, fully grounded, shut-off, electric gauge, chrome on brass filler and vent • **Blower:** 12 volt electric • **Bilge Pump:** 12 volt, automatic and manual, submersible • **Running Lights:** To latest international rules • **Fire Extinguisher:** 2½ lb. dry chemical • **Storage:** Under deck storage well, under seat storage chest, under floor storage well, under console storage well, 2 transom bait wells • **Hardware:** Lifting rings with custom brackets, drain plugs, towing eye, vents • **Trim:** Boot stripe • **Accessories:** Life jackets, dock lines, paddle, Donzi Racing Trim bag.

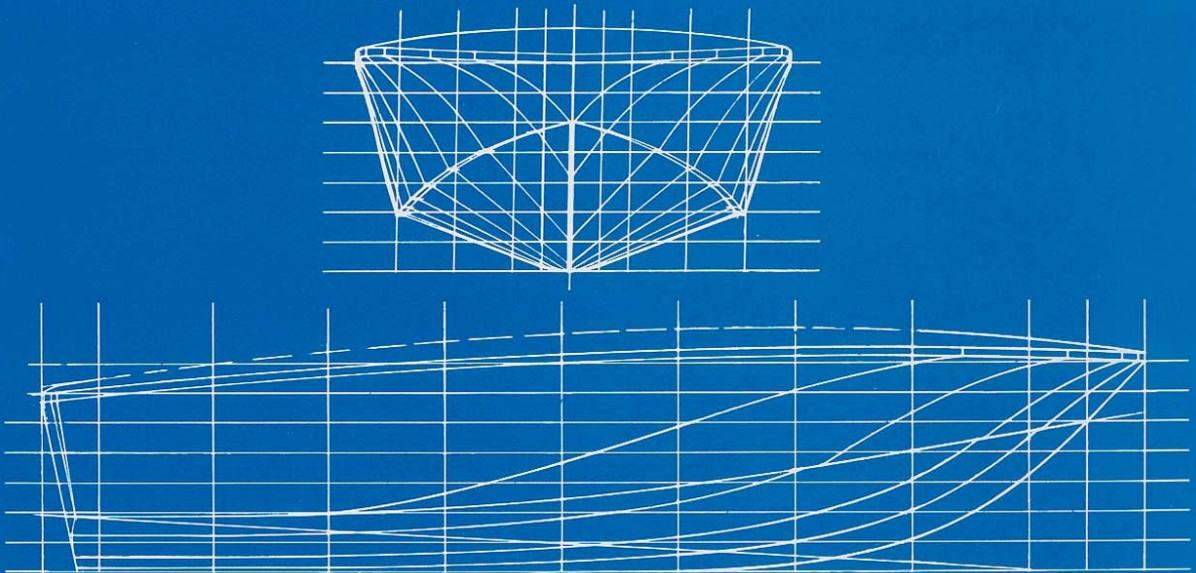
SPECIFICATIONS — **Length:** Overall 19 2½" • **Beam:** 7'10" • **Draft:** to Keel 1'0", to bottom of outdrive 2'3" • **Height,** top of wheel to keel 4'8" • **Gross Weight:** 2700 lbs. • **Fuel Capacity:** 40 gals.

DONZI MARINE

DESIGNER and BUILDER of
THE WORLD'S FINEST HIGH PERFORMANCE POWER BOATS

Presents the
DONZI 19
St. Tropez

- SOFTEST RIDING, DRIEST HIGH-SPEED OPEN UTILITY BOAT EVER BUILT
- INCOMPARABLE HIGH-PERFORMANCE, CUSTOM-FINISHED SPORT-FISHING-DAY BOAT
- FINEST ALL-AROUND CUSTOM PERSONAL BOAT BUILT TODAY
- SPECIFICALLY DESIGNED AND BUILT FOR ROUGH WATER PERFORMANCE
- HI-IMPACT FIBERGLASS CONSTRUCTION



Design • Research Engineering • Testing • Racing • Construction of Hi-performance Power Boats

DONZI 19

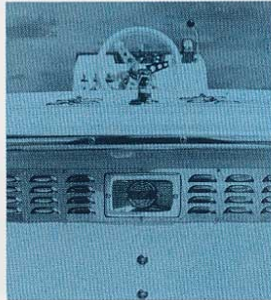
DETAILS & FEATURES



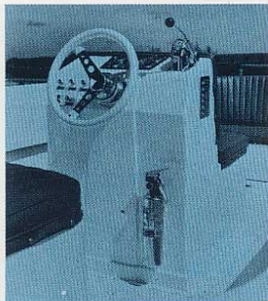
1.



2.



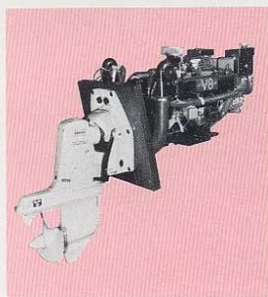
3.



4.



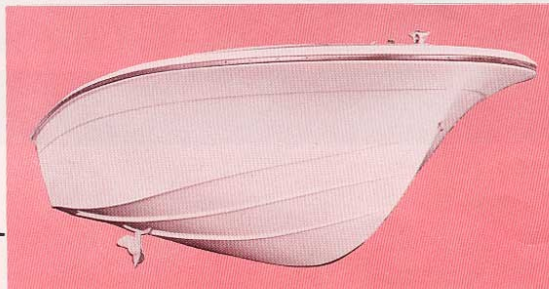
5.



6.



7.



8.

FEATURES THAT SURPASS ANY OPEN UTILITY IN ITS SIZE CLASS

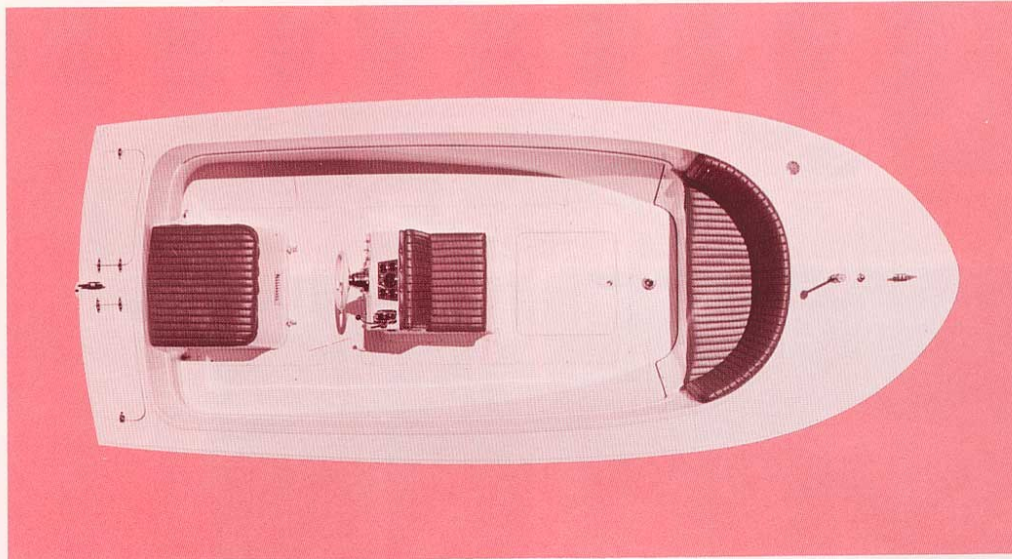
The spectacular Donzis — Donzi 16, Donzi 19 Hornet, and Donzi 28 — have become the world's most talked-about rough water racing boats in less than a year. The DONZI-ST. TROPEZ incorporates the radical hull, strake and chine improvements developed for and from this blue-water competition; in addition, it has unique structural and design features originated by the world's foremost small craft designers — the Donzi team. The result is the perfect sport-fisherman-day boat . . . a beauty that lets you name the game. She's built like an ocean racing boat, laid out like a Maine fisherman, and designed and crafted as only Donzi can do it.

At left are some of the outstanding features which make the Donzi 19 St. Tropez the magnificent boat that it is:

1. Interior arrangement provides comfortable seating for six adults besides the helmsman. Ideal arrangement for water ski observer facing aft.
2. Double strength fiberglass guard rail is designed-in for superior protection against hull damage. Outer rub strip is solid, heavy-duty bright aluminum.
3. International running lights insure safe night operation and avoid use of ungainly telescoping stern light.
4. Console steering and controls on centerline mean handling standing or seated with maximum comfort and safety — the ideal arrangement for the perfect fishing boat. Cushioned engine cover provides wide, comfortable seat for helmsman; front of console is cushioned passenger seat. California-made, dished, heavy-duty racing wheel, toughest of all tested, is standard on all Donzis.
5. "Conestoga" top protects forward cockpit, has large plexiglass forward window. Strong lightweight frame and lightweight nylon cover.
6. Optional power plants are 110 Volvo-Penta Inboard/Outboard with Volvo-Penta 200 Aquamatic outdrive, electric lift, underwater exhaust and alternator (approx. 34 mph); 165 HP Interceptor Inboard/Outboard with speeds over 43 mph; 200 HP Interceptor Inboard/Outboard, speeds to 48 mph.
7. Fiberglass fish boxes (3) are built in. Excellent also as insulated bait or chilling boxes.
8. Radical Donzi bottom design prevents excessive bow lift during acceleration, reduces drag at speed. Strong flare from chine to sheer augments distinctive straking and spray rails to cushion re-entry and flatten spray in choppy seas at high speed. Result: the softest, driest ride ever in an open utility.

The Donzi 19 St. Tropez has unbelievable maneuverability for a boat of its size, with complete visibility at all speeds. Hull and strake design provide superb stability, with less slip in turns than any other boat in its class. Multi-laminate fiberglass hull has very high impact strength, no exterior seams, and extreme rigidity. Built-in safety features include snag-free cockpit, deep-foam seat cushions, dished heavy-duty steering wheel, automatic and manual electric bilge pump, bilge blower and fire extinguisher. Every Donzi St. Tropez is thoroughly tested before delivery. When you accept the keys she's fully equipped and ready to go, with no "bugs" to be worked out and corrected. Step aboard . . . and discover a satisfying world of boating pleasure.





ENGINEERING

SPECIFICATIONS

Length Overall	19' 2½"
Including Outdrive	21'
Beam	7' 10"
Draft to keel	1' 0"
to bottom of outdrive	2' 3"
Freeboard at bow	2' 6"
Amidship	2' 4"
At transom	2' 0"
Height, top of wheel to keel	4' 8"
Top of deck to keel	4' 0"
Gross weight	Approx. 2600 lbs.
Fuel capacity	Approx. 40 gal.
Speed	
110 Volvo	Approx. 34 mph.
165 Interceptor	Approx. 43 mph.
Cruising range at 4000 RPM	
110 Volvo	Approx. 200 mi.
165 Interceptor	Approx. 150 mi.
Cruising time at 4000 RPM	
110 Volvo	Approx. 9 hrs.
165 Interceptor	Approx. 6 hrs.
Steering	Custom Mechanical
Controls	Custom throttle and shift combination
Hardware	Chrome on brass or stainless steel
Upholstery	Naugahyde or equivalent, red or blue
Finish	Mirror-smooth, Wonder White gel, permanent high gloss

STANDARD EQUIPMENT

Power	110 HP Volvo-Penta Inboard/Outboard; 165 HP Interceptor Inboard/Outboard; 200 HP Interceptor Inboard/Outboard, fresh water cooled
Steering	Positive, mechanical, with custom adaptor
Electric System	12 V, color coded
Instruments	Full instrumentation on molded fiberglass console
Controls	Single lever shift/throttle combination
Battery	12 V, 65 amp-hour w/shut off switch
Battery Bracket	Coated steel, racing strength
Fuel System	40 Gallon, custom tank, direct reading gauge, filter, shut off, chrome on brass filler and vent
Engine Filters	Oil, water, air and fuel filters all std.
Blower	12 V, Electric
Bilge Pump	12 V, Automatic and manual submersible
Running Lights	International, stainless steel, recessed stern light
Engine Box	Reinforced, cored fiberglass, sound-deadened, removable, extra large, custom hinges, cushioned
Storage	Under foredeck, with hatch
Engine Ventilation	Adjustable louvered intake, custom exhaust outlet
Rub Rails	High impact molded fiberglass, integral, custom flush trim
Fire Extinguisher	2½ lb. dry chemical
Operation Manual	Engine Manual, wiring diagram, care and maintenance
Fish Boxes	3, fiberglass, built in
Cushions	Custom, foam, zippered, removable, on engine box and console seat
Propeller	3-blade aluminum power wheel
Hardware	Lifting rings with custom brackets, drain plug, vents, towing eye, see-thru fuel gauge cover
Steering Wheel	Custom heavy duty
Oil & Lubricant	Special lubes

PRICES, SPECIFICATIONS AND STANDARD EQUIPMENT SUBJECT TO CHANGE WITHOUT NOTICE.



Take the performance characteristics of the Donzi Hornet; the strength and stamina of an ocean race boat; the sensible open layout and console steering of a Maine fisherman. Add Donzi flair and craftsmanship; the result is...THE DONZI ST. TROPEZ.

High-impact fiberglass throughout, the Donzi St. Tropez is the last word in ocean-going open sportsmen. Built for long life (for the boat and the owner): careful inspection reveals no plywood, no paint, no tacks, nails, rivets or anything to fall apart under use. We proved this in several of the world's roughest, toughest ocean races!



DONZIS ARE NOT RACE BOATS; THEY RACE AND WIN, BUT THEY ARE PLEASURE BOATS.

**SPECTACULAR
RACE RECORD
OF THE
DONZI TEAM**



**LONG BEACH HENNESSY CUP
OCEAN RACE — 1965**

1st Place Overall
2nd Place Overall
1st Place Class IV
2nd Place Class IV

AROUND NASSAU SWEEPSTAKES

1st Place Overall
R. T. Symonette Award
1st Place Class 24'-30' Proto.
1st Place Diesel Class I
1st Place Class V Gas
1st Place Class III Outboard

MIAMI-NASSAU 1965

1st Place Overall
London Daily Express Trophy
Sam Griffith Trophy
Manufacturers Award for Excellence
1st Place Class 24'-30' Proto.
1st Place Class I Diesel
1st Place Class V Gas

**PELICAN HARBOR
100 MI. GULFSTREAM REGATTA**

1st Place Class I

**ST. PETERSBURG
50 MI. OCEAN RACE**

1st Place Class E

SAM GRIFFITH MEMORIAL 1965

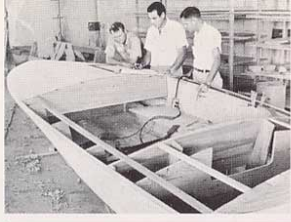
1st Place Overall
3rd Place Overall
4th Place Overall
1st Place Class 24'-35'
1st Place Gas Engine Class IV
1st Place Diesel Class II
1st Place Outboard Unlimited
2nd Place Gas Engine Class III
2nd Place Gas Engine Class II
Hennessy Award

**ORANGE BOWL REGATTA 1965
9 HR. ENDURANCE**

1st Place Class I

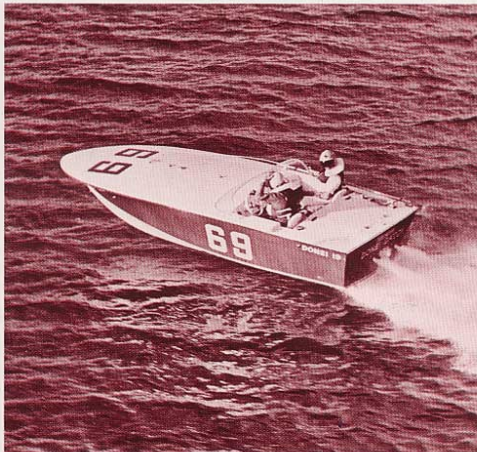
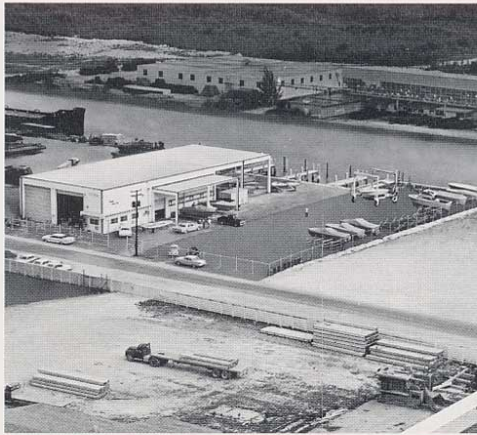
KEY WEST RACE 1964

1st Place Class 24'-35'
1st Place Diesel Class I
1st Place Gas Engine Class III
2nd Place Overall
4th Place Overall
2nd Place Gas Engine Class II
2nd Place Class 18'-24'



BUILDER-DESIGNERS' DREAM COME TRUE

...This magnificent high-performance utility boat and its rugged sisters... the sleek Donzi 16 and 19 (Hornet), were designed by a team under the leadership of Don Aronow and Dave Stirrat, internationally known marine consultants, designers, ocean racers and builders. They headed the same team that designed, built and raced the Formula 233, Formula 275, Formula Jr. and Donzi 28.



ABOVE:
Donzi St. Tropez during tests;

UPPER LEFT:
Donzi's Miami plant: the most advanced, best engineered custom power boat facility, with complete slips, lift and equipment

LEFT:
All Donzi boats are rough water tested before delivery. Donzi 19 during test and racing program before it was offered to the public

Take one ride in these "modern classics"—and you'll know why racing competitors call them "those damned Donzis!"

DONZI MARINE

2940 N.E. 188th ST., NORTH MIAMI BEACH 62, FLORIDA
Phone Area Code 305 945-7518



DESIGNED & PREPARED BY
GROSS/GREENMAN ADVERTISING, INC.
HOLLYWOOD, FLORIDA

*Donzi Marine - 2940 N.E. 188th Street - N. Miami Beach 62, Florida - Phone 945-7518
Cable: Damdonzi*



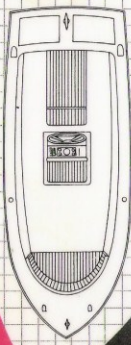
1 OCTOBER 1965

DONZI 19 ST. TROPEZ PRICE LIST

	<u>LIST PRICE</u>	<u>DEALER NET</u>
AS SHOWN IN BROCHURE W/110/200 VOLVO -----	5470.00	4239.00
WITH 165 INTERCEPTOR -----	5835.00	4522.00
WITH 200 INTERCEPTOR -----	6145.00	4763.00
(includes power lift and fresh water cooling)		
POWER LIFT FOR 165 INTERCEPTOR -----	132.00	99.00
ANCHOR LINE, NYLON 100' 1/2" SERVED AND SPLICED		
WITH THIMBLE AND SHACKLE -----	47.00	35.00
ANCHOR 8 LB. DANFORTH -----	23.00	17.00
ANCHOR CHOCKS, FOREDECK -----	12.00	9.00
EXTRA PROP -----	36.00	27.00
ROD HOLDERS (PR) FLUSH MOUNT -----	28.50	21.50
HEAD -----	125.00	93.75
BOW RAIL -----	123.00	92.00
TRAILER, CUSTOM HEAVY DUTY -----	725.00	550.00
SHIPPING CRADLE, NET -----	75.00	56.00
SHIPPING COVER, NET -----	141.00	105.00
PORTABLE SEARCHLIGHT -----	22.00	16.75
COMPASS, AIRGUIDE 4" WITH LIGHT -----	65.00	48.50
LIFE PRESERVERS, EA. -----	5.00	3.75
CANVAS		
A. SPRAY WEATHER HOOD WITH WINDSHIELD -----	284.00	213.00
B. CURTAIN TO TRANSOM FOR WEATHER HOOD -----	105.00	79.00
CANVAS (VINYL)		
A. BIMINI TOP SET (SELF SUPPORTING) 8 FT. -----	209.00	157.00
B. BIMINI TOP SET 11 FT. WITH FORWARD BRACE -----	247.00	185.00
C. WINDSHIELD FOR BIMINI TOP -----	66.00	49.50
D. TONNEAU COVER -----	165.50	124.00
E. CONSOLE COVER -----	40.00	30.00
EXTRA CUSHIONS		
A. FRONT CURVED SEAT BACK & BOTTOM -----	101.00	76.00
B. BULKHEAD CUSHIONS -----	141.50	106.00
LETTERING		
A. NAME ONLY 4" PAINT -----	40.00	30.00
B. NAME & HAILING PORT 4" -----	60.00	45.00
C. NUMBERS 3" PAINT -----	20.00	15.00
BOOT STRIPE -----	44.00	33.00
PAIR GRAB BARS 18" -----	18.75	14.00

*** ALL PRICES SUBJECT TO CHANGE WITHOUT NOTICE, F.O.B. MIAMI, FLA. ***

DONZI MARINE
2940 N.E. 188th STREET
NORTH MIAMI BEACH, FLORIDA
PHONE (945-7518)
AREA CODE (305)



A DONZI
BUILT FOR
FISHING IS
STILL A DONZI...

SPECIFICATIONS

- Length overall . . . 19' 2½"
- Beam 7' 10"
- Draft to keel 1' 0"
- Draft to skeg 2' 3"
- Height, top of wheel to keel 4' 8"
- Gross weight, dry 2600 lbs.
- Fuel capacity 40 gals.
- Speed (120 hp MerCruiser) . . . 35+ mph
(200 Interceptor) 47+ mph
- Cruising range (120 hp) 150+ miles
(200 hp) 140+ miles

STANDARD EQUIPMENT

- Power:** 120 hp MerCruiser Inboard/Outboard. **Steering:** Teleflex mechanical.
- Instruments:** Tachometer, ammeter, oil pressure, water temperature, fuel gauges. **Controls:** Single lever shift-throttle.
- Wiring:** 12-volt fused and color-coded. **Battery:** 12-volt 65-amp-hour heavy-duty. **Fuel System:** 40 gallon custom tank, direct reading gauge, shut-off, chrome on brass filler. **Running Lights:** To latest international rules. **Fire Extinguisher:** 2½ lb., dry chemical. **Blower:** 12-volt electric.
- Bilge Pump:** 12-volt submersible, automatic and manual controls.
- Hardware:** Lifting rings, vents, towing eye, drain plug, see-through fuel gauge cover.

DONZI *St. Tropez 19*

The Donzi 19, St. Tropez, an incomparable high-performance sport/fishing boat with a soft, dry, high-speed ride in rough or calm water. Built of hi-impact fiber glass, the St. Tropez has all the strength of an ocean race boat combined with design that provides amazing maneuverability and stability for a large boat. The St. Tropez is a true Donzi: tough, beautiful, fast and rare.



DECEMBER 15, 1974

DONZI PRICE SCHEDULE

POWER OPTIONS	1975						
	Outboard 16' 3400	Ski Sporter 16'	18 2&3 18'	X-18 18'	Hornet 19'	St. Tropez 19'	G.T. 21'
130 HP Volvo		6990
188 HP Mercruiser	8510	8800	9768	9768	13040
235 HP Chris Craft	...	8660	9260	9550	10510	10510	13950
250 HP Chris Craft	...	9000	9600	9890	10850	10850	14325
300 HP Chris Craft	9760	10050	11010	11010	14555
455 Cu. In. Berkley Jet	9600	9890	10850	10850	14340
280 HP Mercruiser	14775
<u>ACCESSORIES</u>							
Berkley Jet-O-Vator	...	385	385	385	385	385	385
Carpet(All Weather)	55	55	65	65	80	...	STD
Engine Hour Meter	...	75	75	75	75	75	75
Electric Horn	75	75	75	75	75	75	75
Shipping Cover	165	165	165	165	265	265	265
Shipping Cradle	165	165	165	165	200	200	240
Speedometer	65	65	65	65	65	65	STD
Trim Tabs	385	385	385	385	385	385	385
Two Tone Bottom	...	120	120	120	120	120	130
Volvo Competition Speedmaster	...	2000	2000	2000	2000	2000	2000
Volvo Power Trim	320	320	320	320
Windshield	130	130	130	...	STD	...	STD

NOTE: Custom power plants and special drive assemblies are available upon request, plus selections from the following manufacturers : Chrysler, Holman & Moody, Waukesha, Flagship and Black Widow
 Prices are effective December 15, 1974, and are subject to change without notice.