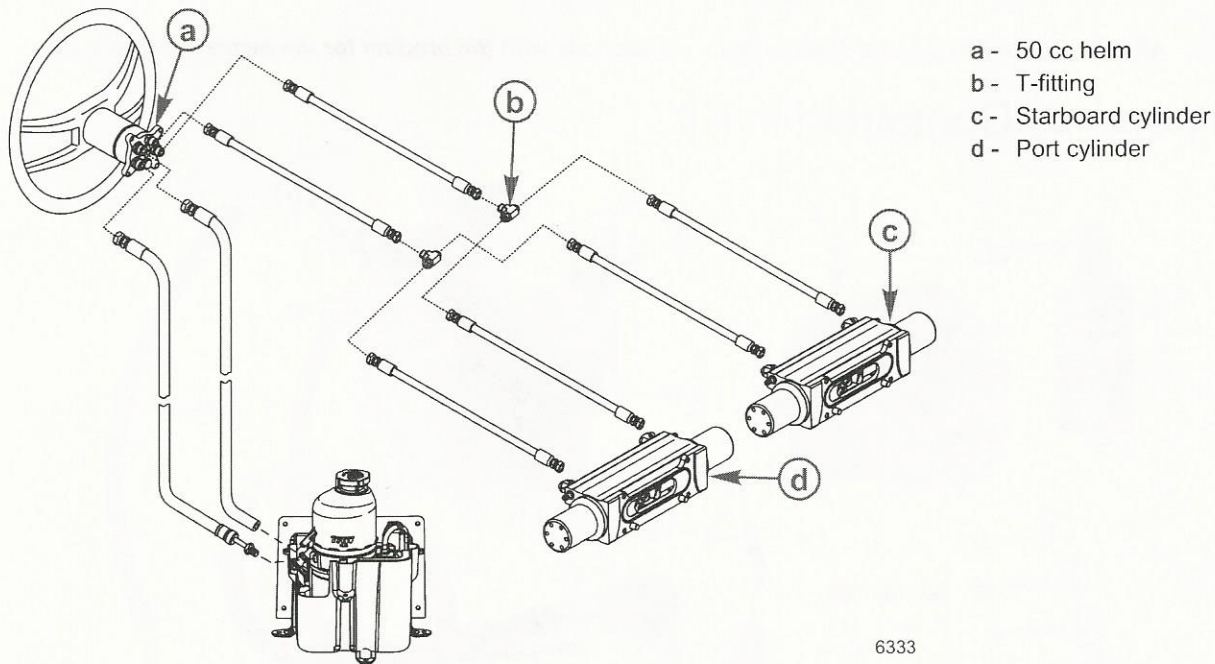


Notice for 200 HP and Higher Verado Models

NOTE: On some large/heavy dual outboard boats, the steering forces generated in extreme maneuvers may create loads that exceed the pump's pressure capacity, where the operator may feel intermittent periods of load feedback at the steering wheel. The steering wheel may feel hard to turn for brief periods during these extreme maneuvers. If this happens and steering performance is deemed unacceptable for the application, a second (accessory) steering cylinder can be installed. When using a second steering cylinder, the 40 cc helm should be replaced with a 50 cc helm.



Installation Procedure

Selecting Location for the Power Steering Pump

⚠ WARNING

Dirt or contaminants in the hydraulic steering system can damage the steering system's internal components. Damaged components can lead to serious injury or death due to loss of boat control. Do not allow dirt or contamination to enter the helm, lines, or cylinder of this steering system and perform all hydraulic inspections, service, or assembly procedures in a clean work area.

Select a mounting location (floor or side of internal bulkhead) for the installation of the power steering pump that meets the following requirements.

- To reduce noise on aluminum or metal hulls, isolate steering hoses from hull with suitable nonabrasive hangers.
- Steering hoses from steering wheel helm must be free of twists or stress. Gently secure hose bundle together with a cable tie, located approximately 25.4 cm (10 in.) from the steering wheel helm.
- Do not mount pump on an angle greater than 15° from vertical position.
- The pump electrical wiring must be within reach of the auxiliary battery.
- Pump should be mounted in an area that allows sound enclosure, cover removal, and easy access to the fill cap.
- Install pump in an area where bilge water will not contaminate the pump.
- To reduce transmitted noise, mount pump on wood or fiberglass surface. Avoid mounting pump on aluminum or steel surfaces.